

# Amphenol

Amphenol-Tuchel Electronics GmbH

## Product Summary



connecting tomorrow



**Amphenol Corporation**

**Amphenol**  
connected

[www.amphenol.com](http://www.amphenol.com)

**Amphenol-Tuchel Electronics GmbH**

[www.amphenol.de](http://www.amphenol.de)

**Amphenol**  
connecting tomorrow

## The Corporation

Amphenol is one of the largest manufacturers of interconnect products in the world. The company designs, manufactures and markets electrical, electronic and fiber optic connectors, coaxial and flat-ribbon cable, and interconnect systems.

The primary end markets for the Company's products are communications and information processing markets, including cable television, cellular telephone and data communication and information processing systems; aerospace and military electronics; and automotive, rail and other transportation and industrial applications.



## Wherever You Are

Amphenol employs 8,500 people worldwide in over 50 countries. Production facilities are located in North America, South America, Europe, Asia and Australia.

Amphenol combines local support within global structure that results in optimal service, creativity and exceptional technologies performance worldwide.



# Corporation



## Product Development

Amphenol's development strategy is to partner with customers early in their development process. We bring a high level expertise to programs in an effort to achieve innovative designs that meet current and future needs. Our global presence enables Amphenol to provide service on a global scale.

# Amphenol-Tuchel

## The Company

Amphenol-Tuchel Electronics GmbH is a member of the USA based Amphenol Corporation. With our own global presence we offer our customers exceptional technical support and service in the areas of development, production and distribution. Amphenol-Tuchel Electronics GmbH has a successful history as a partner to our customers and sets standards for connector technology.

An aerial photograph of a large industrial complex with multiple large, flat-roofed buildings. The image is overlaid with a blue gradient and large, semi-transparent text. The text 'no' is on the left, and 'cting tomorrow' is on the right, together forming the phrase 'connecting tomorrow'.

no  
cting tomorrow

## Quality

From the beginning of the development process, Amphenol-Tuchel Electronics GmbH gives quality considerations the top priority. Meeting customer requirements is the main focus of the product development process.

Interdisciplinary project teams with diverse backgrounds from marketing, product engineering and production guarantee the development and production of robust and reliable connector solutions.

Our quality assessment begins with the initial contact to the customer and extends through the life of the product. A satisfied customer is the measure of our success.

Amphenol-Tuchel Electronics GmbH is ISO 9001, QS 9000 and VDA 6.1 certified. Our environmental awareness is oriented on the newest aspects of the ISO 14001.



# Electronics GmbH



## Technology Leadership

Amphenol-Tuchel Electronics technological leadership applies not only to the products we produce but also in the services we offer. We guarantee flexibility in our operations including a wide range of manufacturing environments. We implement state of the art automation processes on a global basis to meet your specific logistic needs providing low cost, high quality products and services. Efficient manufacturing structures begin with sound product development and simultaneous engineering collaboration on an interdisciplinary basis. Through these methods we are able to reduce development leadtimes from concept to series production. This commitment to excellence in product and process development can be observed in the wide array of connector products and cable assemblies we produce for the various applications and regions of the world.

## Connectors for Machine Tooling and Drive Technology



### Series

C146E, C146D, C146M  
C148U, C16-1, C16-3

Pages 10-11

## Connectors for Measurement and Sensor Technology

### Series

C112M, C091A/B, C091D,  
C191M, Cable assemblies



Pages 12-13

## Smart Card Connectors



PUSHMATIC®, Superflat, PCB Mount,  
Hybrid Reader, MultiMediaCard Connector  
SecureDigital Memory Card Connector

Pages 14-15

## Connectors for Mobile Communication

SIM-Card Connectors, Flash Memory  
Card Connectors, I/O Connectors,  
Internal Connectors, RF-Switches,  
Antennas



Pages 16-17

## Automotive Connectors



2 pole Cable Sets  
for 11mm Generator Interface,  
Shorting clips,  
2 pole Cable Sets  
for 10mm Generator Interface,  
Products for Telematics

Pages 18-19

## Products for Wireless Infrastructure

RF/Coax Products,  
Low Frequency Products,  
Power Products,  
Fiber Optic Products



Pages 20-21



# Guide

Page 22

## Products for Broadband Applications



75  $\Omega$  CATV Cables,  
50  $\Omega$  TWB/LMR Cables and  
Cable Assemblies

Page 23

## Connectors for Internet Equipment

DVI Connectors,  
FPC Connectors,  
D-Sub Connectors,  
Total Product Range for  
Internet Equipment



Page 24

## Fiber Optic Products



LX.5<sup>®</sup> Connectors & Adapters,  
SC & MTP Shuttered Adapters,  
Engineered Multi-fiber Assemblies

Page 25

## Connectors for MIL-Aerospace

PPS Push-Pull Connectors,  
711 Data Bus,  
38999 Series



Pages 26-27

## Product Development



Powerful Development,  
High-Performance Production,  
Efficient Logistics

Pages 28-29

## Fax Answer Sheet

The response form is a fold out page  
and offers you the possibility to  
request further information about  
our products.



# Connectors for Machine To

## C146E



The universal series C146E provides 6 to 24 contacts in screw or crimp termination. The crimp contacts are available as turned or stamped versions. Also offered is a "Double Density" option with up to 48 turned crimp contacts.

### Features:

- 6, 10, 16, 24 and 48 with PE-contact termination
- Rated voltage: 400 V
- Rated current: up to 22 A
- IP Protection: IP65
- Termination: crimp, screw

## C146D



The C146D series is designed to CECC 75 301 - 801 (DIN 43652) specifications, thereby accommodating 7 to 128 turned or stamped crimp contacts in a single housing. This option makes the series especially suitable for applications requiring multiple contacts. Stamped crimp contacts support an economical assembly process with excellent repeatability and a high quality standard.

### Features:

- No. of contacts: 7, 15, 25, 40, 50, 64, 128
- Rated voltage: 250 V AC
- Rated current: up to 16 A
- IP Protection: IP54 and IP65
- Termination: crimp, screw

## C146M



The Modular system enables signal and power contacts within one connector housing and provides flexibility to adapt connector configurations to individual customer needs. Every user can select their own connection designs with up to 280 contacts in a single housing. The series also offers many coding possibilities.

### Features:

- No. of contacts 3 - 280
- Rated voltage: 63 - 1000 V
- Rated current: 5 A - 70 A
- IP Protection: IP65
- Termination: crimp

# Control and Drive Technology

## C148U



The C148U series was especially designed for use with servo drives and for decentralized controls in rough environments. Applications such as drive technology simultaneously require significant temperature resistance, vibration durability, contact assurance, watertight housing and EMI resistance. These connectors are simple, quick and reliable to handle with regard to assembly and application.

### Features:

- No. of contacts: 3+3+PE
- Rated voltage: 630V AC/DC
- Rated current: max. 60A
- IP protection: IP65 / IP67
- Termination: crimp

## C16-1



The C16-1 connector family is an industrial standard in the equipment and machine technology area as well as drive- and control technology. The main features include robust and durable plastic housings with screw mating and offer a very good price to performance ratio by concept.

### Features:

- No. of contacts: 3+PE / 6+PE
- Rated voltage: max. 400V
- Rated current: max. 16A
- IP Protection: IP67
- Termination: crimp, solder, screw

## C16-3



Two different shell sizes for the C16-3 series are available which expands the range of this plastic circular series to include bayonet mating and mixed signal and power terminals within a single connector housing. The entire C16 series is unique and extensive making it the optimal choice of connector across a wide range of applications.

### Features:

- No. of contacts: 5+PE up to max. 19+PE
- Rated voltage: max. 400V
- Rated current: max. 21A
- IP Protection: IP65
- Termination: crimp, screw



# Connectors for Measurement

## C112M



The M12 connectors feature a compact and robust design and superior mechanical and electrical performance. The connectors are supplied as cable assemblies including molded on cables of different standard lengths. Shielded versions are available as well. The fields of application range from Automation to Sensor and Telecommunication Technology.

### Features:

- Number of Contacts: 3, 4, 5 contacts
- Rated Voltage: 30-250V
- Rated Current: 4A
- IP Protection: IP65/67

## C091A/B



The C091 connectors are used in the areas automation, test measurement & control, medical, sensors and telecommunication. Their proven design and performance make these connectors a recognized industry standard. They are available with screw or bayonet locking system. Receptacles are available for front or back panel mounting and offer a variety of connection possibilities. Versions for crimp contacts are a high light of this connector series.

### Features:

- No. of contacts: 2-8, 12-14 Contacts
- Rated voltage: 150-300V
- Rated current: 3-5A
- IP Protection: IP40
- Termination: crimp, solder

## C091D



Our C091D connectors are principally the same as our well-known C091A series except that they are produced with all metal housings for applications requiring rugged and robust interconnects that are sealed to IP67 requirements and where shielding may be needed.

### Features:

- No. of contacts: 2-8, 12-14 Contacts
- Rated voltage: 150-300V
- Rated current: 3-5A
- IP Protection: IP67
- Termination: crimp, solder

# and Sensor Technology

## C191M



This product range has applications in medical technology for use with defibrillators or the secure connections between displays and patient monitoring devices. The molded cable versions offer the highest quality standards for such sensitive fields as intensive care. The female connectors enable a modular design of the monitoring devices. Special connector blocks offer efficient and compact interfaces.

## Cable assemblies



The Amphenol product line includes a wide range of cable connectors. We have established ourselves as a leading manufacturer of connectors and cable assemblies providing full service support to our customers. When it comes to quality, logistics, flexibility and value we can offer the advantages of working with a company that possess global reach combined with local support and manufacturing. State of the art equipment and modern facilities distinguish Amphenol from our competitors. We provide unique cable assembly solutions by utilizing all interconnects common in the market place and the highest degree efficiency. Test us...

# Smart Card Connectors

## PUSHMATIC®



The PUSHMATIC® product family features landing contacts for rugged applications such as: point-of-sale systems, vending equipment, and access control.

### Features:

- High numbers of card insertion cycles, due to the principle of landing and self-cleaning contacts
- Designed for harsh applications and environments
- Modular system with several operating methods from manual handling to automatic card ejection
- Card end position switch acts as card locking sensor acc. to EMV (Europay Mastercard Visa / Integrated circuit Card specification for Payment Systems)
- Various termination options: flat cable in standard and custom lengths with sockets according to IEC 60 603-13; and flexprints

## Superflat



Our superflat style Smart Card Connector product family features landing contacts (push-pull) or landing card providing a high degree of miniaturization. Suitable applications include: point-of-sales systems, mobile devices, access control, keyboards, etc.

### Features:

- Miniature size ideally suited for mobile devices
- Additional space saving possible by integration of base into customer housing
- Versions acc. to EMV (Europay Mastercard Visa / Integrated circuit Card specification for Payment Systems)
- Dip solder version available featuring snap-in mounting, chip side up card insertion, and a debris slot to provide egress of coins, paper, etc.
- Snap-in version also available with flexprint termination (both SMT and PCB)
- High number of mating cycles due to minimized wiping distance on card contacts
- Contact self-cleaning effect

## PCB Mount



Typical applications for Smart Card Connectors with wiping contacts and PCB mounting are set top boxes, toll road transponders, parking meters, utility metering systems, etc.

### Features:

- Termination: dip solder pins or SMT
- Self-cleaning card presence switch on most models detecting final card position
- Special shape of wiping contacts minimize card scratching and wear
- Versions acc. to EMV (Europay Mastercard Visa / Integrated circuit Card specification for Payment Systems)
- Dual plane version with 2 x 8 contacts for chip up & down card handling



## Hybrid Reader



The manual Hybrid Reader accepts magstripe cards and smart cards in the same slot. There is no need to change the connector in case of switching the card system. Cards can be substituted gradually without a loss in convenience for the user. Due to compact design the Hybrid Reader can be integrated in existing systems easily. Smart card reader features landing contacts.

### Usable Cards

#### Magstripe cards

ISO 7810, 7811, 7812; LOCO and HICO. The magstripe will be read 100% during insertion and extraction of the card.

#### Smart cards

ISO 7816. Contact positions ISO, AFNOR and ISO & AFNOR can be read and written to. Embossed cards acc. to ISO 7811, part 3 are accepted.

## MultiMediaCard Connector

## SecureDigital Card Connector



The MultiMediaCard Connector (MMC) and the SecureDigital Memory Card Connector (SD Card) are designed for attaching, fixing and electrically interconnecting the card to the system board. Most suitable applications are:

- Telecommunication
- Audio
- Video
- PC
- Consoles (video games etc.)
- Navigation
- Automotive
- Industry
- MP3 player

### Features:

- Minimized co-planarity tolerances due to advanced terminal design
- On board space saving due to termination geometry
- Holes for mechanical and electrical contact tests
- Customized fastening
- Acc. to MMCA specification

# Connectors for Mobile

## SIM-Card Connectors



As the market leader in the field of SIM-Card Connectors, we offer a multitude of different designs. SIMLOCK® are closed systems with integrated card guides and locking mechanisms, so those problems are avoided in reference to installation tolerance. Our SIMBLOCK® contact blocks have a reduced space requirement on the printed board. The products fulfill the GSM 11.11 as well as the ETSI TS102 221 – Specifications.

### Features:

- Varied design sizes
- Card presence switch optional
- SMT-solder version as well as a solder free connection to the printed board (SIMFLOAT)
- Spoon contacts allow card insertion from different directions
- WINGBLOCK combines minimal dimensions with a card guide
- Qualitative high grade and 100% tested

## Flash Memory

### Card Connectors



Along with the MultiMediaCard- and Secure Digital (SD) Card Connectors we also offer contact solutions for half size and high speed MultiMediaCards as well as combined solutions. The emphasis of development is therefore compact dimensions and automated assembly.

### Features:

- Premating contacts
- Central Pick & Place area for automated assembly
- Optional clearance mount

## I/O Connectors



Our interfaces between the end device and accessories distinguish themselves through a secure contact. They serve for transmission of data (galvanic, IR, RF) as well as for energy supply.

### Features:

- Varied number of contacts
- Front contact / sliding contact
- Locking / shielding possible
- Microphone / IR-interface may be integrated
- Sound Channel for guiding of sound waves
- Separate charging socket
- Possible connection for hand free communication
- Solder or float connections

# Communication

## Internal Connectors



The internal connectors serve as reliable contacts for the components within a device. They include among others, Battery-, Board to Board-, LCD-Connectors, Spring Clips, Vibra connectors, Camera-Connectors and PoGo-contacts.

### Features:

- Contact to PCB: SMT solder version or floating contact version
- Single or multiple contact variations
- Straight or angled versions
- Minimized pitches
- Compact dimensions
- One or two part design

## RF-Switches



The broad range of our RF-switches can be used for testing purposes as well as for external antenna connections. The RF-switch distinguishes itself through minimal insertion absorption and full mechanical switching.

### Features:

- Up to 5 GHz
- Turned housings and contacts
- Stamped and formed versions as cost effective solutions
- Straight and angled designs
- Compact dimensions

## Antennas



Our internal and external antennas are available in many different designs (i.e. GSM, GPS, PCS, UMTS, BLUETOOTH). The focus of our development rests in the field of miniature size dimensions for Quad-Band-, internal antennas, and antennas with minimal SAR. The optimal product concept is examined with our SAR measuring devices as well as with our reflection free anechoic testing chamber.

### Features:

- Single to 4-Band antennas
- Stubby, retractable, dipole and planar antennas
- Assembly by turning or locking mechanisms
- Optional with integrated RF-switch
- Integration in the housing shell



# Automotive Connectors

## 2 pole Cable Sets for 11mm

### Generator Interface



The Amphenol program of 2 pole cable sets for 11mm interface includes a multitude of applications according to customer demands. The interface is compatible with standard 11 mm squib carriers and couplers with global standards such as USCAR, the German automotive industry, and BNA.

#### Features:

- Additional Connector Position Assurance (CPA) guarantees a more secure connection and releases of shorting bridge switch functions
- Variation without additional CPA
- Insulating coils or ferrits corresponding to the filtered frequency ranges
- Wide range of cable assemblies: twisted and straight wire strands, covered lines or flat band cable (FCC)
- Straight and angled connector designs
- Coding A, B, C as well as Q and R are available to reduce false connection

## Shorting clips



Amphenol offers shorting clips for all the current gas generators suitable for our 10mm and 11mm cable assemblies.

#### Features:

- Standard A, B, C coding for the 11mm interface for the reduction of false connections as well as Q and R for special codings
- Performance for connection with and without hooking clamps for the 10mm version
- Suitable for full automated assembly processes
- Different colors for desired customer features

## 2 pole Cable Sets for

### 10mm Generator Interface



The standard or super flat housings developed in collaboration with our customers along with different cable outlet variations complete the 10mm interface product range.

#### Features:

- Cable outlets of 0°, 10° and 20° (short or long) are available for different sizes
- Insulating coils or ferrits corresponding to the filtered frequency ranges
- Cable termination in solder, weld or crimp contacts
- Superflat version with minimized dimensions
- Clamps with optional locking hooks for increased connection strength
- Wide range of cable assemblies: twisted and straight wire strands, covered lines or flat band cable (FCC)

## Products for Telematics



Amphenol offers coax-connectors, coax-cables and customer specific modules for the varied telematic applications of motor vehicles.

#### Features:

- Coax-connectors according to FAKRA specifications
- Special designs such as angled connectors and special fastening features for the vehicle interior
- Low loss and high temperature coax-cables designed especially for automobile applications
- Integration of different technologies

# Products for Wireless

## RF/Coax Products



Our range of RF and Coax products includes connectors, cable and cable assemblies in all types. We offer high quality miniature, sub-miniature, standard and wireless (BNC, TNC, SMA, SMB, Type N, Type F, Type G, 7/16, QWS and QDS). The RF/Coax products are used in mobile antennas, base stations & antenna jumpers and for internal equipment wiring.

## Low Frequency Products



The Amphenol product range of low frequency products includes a wide variety of connectors, cable and cable assemblies such as: SCSI, VHDCI, HSSDC, Modular Jack, USB, IEEE1394, D-Sub, 2.0 mm Metric, Filtered Products and Flat Cables.



# Infrastructure

## Power Products



The Amphenol power products include a wide variety of rectangular and circular connectors, cable assemblies and customized or built to print power distribution assemblies as well as Bus Bars. They feature a highest quality standard and easy handling.

## Fiber Optic Products



Our fiber optic products are designed for applications demanding a high volume of data transmission. We offer fiber management systems, jumpers/pigtails, connectors, attenuators, couplers and multiplexers for use in any fiber application.

# Products for Broadband Applications

## 75 $\Omega$ CATV Cables



Amphenol is the world leading manufacturer of 75  $\Omega$  coaxial cable such as RG6 and RG11 drop cables, head-end cable and low loss semiflex cable.

Amphenol TFC CATV cables supply settlements districts and towns with a lot of television and radio programs without interference.

### Features:

- Frequency range up to 1000 MHz
- Trunk and drop cables are made out of aluminium and have a foamed polyethylene dielectric
- Low weight
- Easy handling and mounting
- Many different types acc. customer's request

## 50 $\Omega$ TWB/LMR cables and

### Cable Assemblies



TWB cables are high performance, flexible, low loss cables developed for use in wireless systems.

The TWB cables can be used in mobile antennas, base stations & antenna jumpers and for internal equipment wiring.

### Features:

- RF performance comparable to corrugated copper cables
- More flexible, less heavy and more easy to install connectors
- TWB offers a far lower loss and better shielding than RG types
- Full connector product range
- High quality custom TWB cable assemblies



# Connectors for Internet Equipment

## DVI Connectors



Amphenol DVI Connectors provide two points of contact for optimal signal integrity and reduces insertion force to ensure high reliability. They feature first mate last break for ESD considerations. DVI connectors allow system to be plugged and unplugged without shutting down or reconfiguration as well as high speed transmission (analog = 2.5GHz, digital = 4.95 Gbps or 9.9 Gbps).

### Features:

- Protruding shield
- Rugged LFHTM contact design
- Fully Shielded
- Plug and Play
- Excellent EMI/RFI performance
- Analog coaxial lines
- Single and dual link digital signalling

## FPC Connectors



Amphenol FPC Connectors offer a wide range of flexibility to meet the tight packaging needs and other compact equipment needs. The solid design withstands high-temperature SMT soldering processes. Main applications are PDAs, Digital Video Cameras, Cellular Phones, Digital Audio Players, Notebook PCs and other low profile applications.

### Features:

- 0.5mm pitch and 1.0mm pitch
- Vertical and horizontal type
- Tube and Tape & Reel Packaging
- Secure retention against shock and vibration

## D-Sub Connectors



Amphenol D-subminiature family of connectors offers a wide variety of styles, options and accessories and is often the most economical solution to any interconnect problem. Ideally suited for multipurpose applications, we cover a wide range of industrial, communication, computer and avionics market requirements. The different configurations, terminations, mounting features, contact plating and assembly processes will permit you to find the right product you need for your own market. All with the highest quality of an Amphenol product.

### Features:

- Straight and R/A type (different footprint)
- IDC, straddle, crimping and solder type
- Slim type available for Notebook PC application
- Suitable for SMT reflow soldering
- Dual-Port D-Sub available

## Total Product Range for

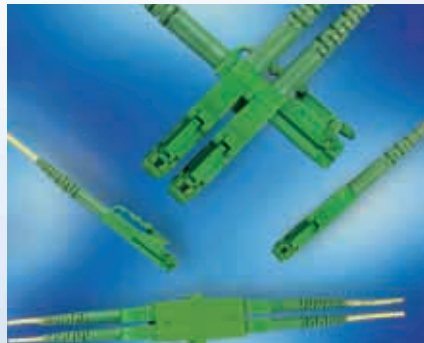
## Internet Equipment

- DVI Connectors
- D-Sub Connectors
- SCSI Connectors
- HSDDC Connectors
- USB Connectors
- Fire Wire Connectors
- Modular Jacks
- Flatcable
- Cable Assemblies
- DIN Connectors
- MeMS
- Coaxial Connectors
- Flexprint Connectors



# Fiber Optic Products

## LX.5® Connectors & Adapters



Amphenol's LX.5® connectors and adapters offer double the density of standard SC connectors in a feature-rich, mechanically robust design.

### Features:

- Integrated shutter system provides eye protection and shields the fiber endface during handling and installation
- Shutter is fully automated requiring no manual operation by the end user
- Low-profile, rugged design prevents tangling of cables while maintaining connection without sacrificing critical space requirements
- Current styles include APC, tunable singlemode and multimode versions for use with 1.7mm, 2.0mm and 900µm cable
- Clip available to create duplex from two simplex connectors

## SC & MTP Shuttered Adapters



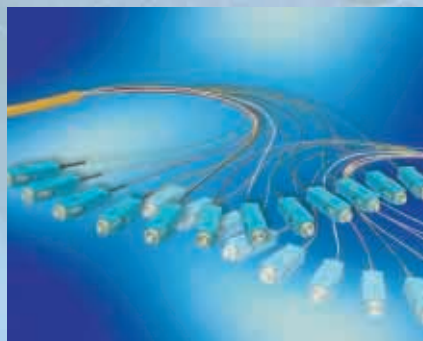
### Features:

- Provides eye protection by blocking laser light during mating and de-mating of the SC connectors
- 100% automatic shutter operation requiring no operator handling of shutter door.
- Simplex and duplex designs (duplex design pending)
- Accommodates industry standard (JIS) panel layouts
- Plastic meets UL 94V-0 flammability requirements
- Available with zirconia or phosphor bronze alignment sleeves
- Screw-mount or reduced-flange options available

Our new internal shutter solutions for Amphenol's SC & MTP adapter designs provide a cost-effective means of blocking laser light. This is accomplished by an integrated, retractable shutter inside the adapter body, which is only actuated by insertion of the SC or MTP connector. Contact with the ferrule endface and fiber core is avoided due to the stepped design of the shutter, preventing endface damage. An improvement over other external shutter solutions, Amphenol's design is fully automatic requiring no manual intervention.

## Engineered Multi-Fiber

### Assemblies



Multi-fiber cable assemblies are enormously valuable in speeding up the installation process by eliminating the need for unnecessary splicing or terminations in the field.

Assemblies are available in various fiber counts, with distribution cable or outside plant cable (OSP). OSP cable assemblies utilize end-blocking kits for water protection and fanout tubing for fiber ruggedizing. Distribution is 900µm tight buffered and typically not ruggedized, depending on the application. While these assemblies are most often pigtailed, jumpers are also available and provide numerous installation advantages. Some typical multi-fiber cable assembly options are LX.5®, SC, LC, FC, ST, MT-RJ (male or female), and MTP (male or female).

# Connector for MIL-Aerospace

## PPS Push-Pull Connectors



A range of sealed miniature Push Pull connectors for industrial and ground defence applications.

### Features:

- Miniature diameter less than 1/2"
- High Density contact arrangement
- Sure lock Push-Pull connector
- 5 orientation keys
- 4 keyway orientations
- EMC grounding fingers
- Chemical / NBC resistant

## 711 Data Bus



Data Bus Interconnection System designed for data transmission as defined by MIL-STD-1553B and DEF STAN 00-18 (Part 2). This system is also ideal for video transmission systems and the termination of screened twisted pairs.

Approved and qualified to a number of International Specifications. 711 Series connectors incorporate a vibration proof lock mechanism. The triaxial, all crimp contact used in the 711 series single way connectors is common to the multiway connector housing allowing uprating of equipment at any time. The range includes micro couplers, multiway cable assemblies and splices and terminator products to complete the full MIL-STD-1553B system.

## 38999 Series



### JT

Lightweight low profile bayonet connector. Ideal for use in avionics box and other limited space conditions.

### SJT

A lightweight scoop proof bayonet connector intermountable with MIL-C-26482 type connectors. Currently used on European military aircraft.

### LJT

A range of rugged scoop proof bayonet connectors suitable for general duty applications, i.e. ground support systems.

### TV

Highest performance connector with quick threaded coupling mechanism. Used in high vibration and EMI/RFI environments and on portable communication systems.

A stainless steel connector firewall version is available for use on engine harnesses.

MIL-C-38999 connectors are designed and approved to meet the most stringent requirements of the military and aerospace industry. Within the connector range, Amphenol produces four series of connectors. These cover low profile lightweight to ruggedized scoop proof connectors. All connectors are rated at 175°C for olive drab finish and 200°C for electroless nickel. A cadmium free olive drab version is available. Contact counts in the connector's range from 1 to 128 with five sizes of contact and over 100 insert planforms are available. With this broad range a MIL-C-38999 connector is suitable for the majority of harsh environment applications.

# Product Development

The development of new products and series, which are based upon the demands of specific applications or markets, are the primary activities of Amphenol. We employ new technology, production procedures and materials in order to optimize these application and cost considerations. Our broad knowledge base and know how from many years of experience enable us to offer creative and well thought out interconnect solutions. Early involvement between Amphenol and our customers guarantees a higher degree of quality for newly developed products and a shorter time to market.

## Powerful Development

For the design of optimal connection solutions, our development team has an extensive knowledge base and the most modern CAD and CAE capabilities. Included in the first steps of the development process are all relevant production criteria with help from simulations such as FEM or Mold Flow. Methods such as Rapid Prototyping and our in house prototype department can provide functioning samples and small series in the shortest possible time. Our surface and test laboratory, which has an extensive array of equipment, tests the quality of the sample and series products using elaborate test programs in order to assure 100% customer satisfaction.





## High-Performance Production

Our production competence enables us to manufacture to highest level of quality connectors and cable assemblies. According to demand and amount, we have the possibility to manufacture products using manual, half-automated or fully automated processes in many worldwide facilities. As such, we are in a flexible position to respond to the specific wishes of our customers. Efficient tool production, heavy duty stamping, modern molding technology, fully automated production equipment with a very short output time and process assured testing technology enable economical mass production with uniform quality.

## Efficient Logistics

The satisfaction of our customers through our logistic concept is a main priority. Through our worldwide distribution and service network, we deliver products in the shortest possible time with the proper quantity and to the exact locations. As such, we utilize resources such as SAP / R3, EDI and a differentiated Supply Chain Management. KANBAN, Just-in-time delivery or Hub System Processing is our customary practice.



#### More Information Please...

With the response form on the reverse side, you may simply and comfortably request further information regarding our products. To make it as simple as possible, you may fold out the fax answer sheet and while reading the catalog, select the corresponding products for which you would like to have more information.

# Fax Answer Sheet

To:  
Amphenol-Tuchel Electronics GmbH  
Customer Service  
D-74064 Heilbronn  
Germany  
Telephone 07131/929-0  
**Fax 07131/929-486**  
E-Mail: info@amphenol.de

From:  
Company .....  
Contact Person .....  
Address .....  
City/Country ..... Zip/Country Code .....  
Telephone ..... Fax .....  
E-Mail .....

We are interested in receiving information for the following product areas:

- |   |   |
|---|---|
| <input type="checkbox"/> Machine Tooling and Drive Technology | <input type="checkbox"/> C146 <input type="checkbox"/> C148 <input type="checkbox"/> C16-1 <input type="checkbox"/> C16-3 <input type="checkbox"/> Other  |
| <input type="checkbox"/> Measurement and Sensor Technology    | <input type="checkbox"/> C091 A/B/D <input type="checkbox"/> C112M <input type="checkbox"/> C191M <input type="checkbox"/> Other  |
| <input type="checkbox"/> Cable Assemblies                     |   |
| <input type="checkbox"/> Smart Card Connectors                | <input type="checkbox"/> PUSHMATIC® <input type="checkbox"/> Superflat <input type="checkbox"/> PCB Mount <input type="checkbox"/> Hybrid Reader  |
|   | <input type="checkbox"/> Multimedia / SD Card <input type="checkbox"/> Other  |
| <input type="checkbox"/> Mobile Communication                 | <input type="checkbox"/> SIM Card <input type="checkbox"/> Flash Memory Card <input type="checkbox"/> I/O <input type="checkbox"/> Internal Connectors  |
|   | <input type="checkbox"/> Antennas <input type="checkbox"/> High Frequency Switch  |
| <input type="checkbox"/> Automotive Products                  | <input type="checkbox"/> 11mm Cable Sets <input type="checkbox"/> 10mm Cable Sets <input type="checkbox"/> Shorting Bridge  |
|   | <input type="checkbox"/> Telematic  |
| <input type="checkbox"/> Products for Wireless Infrastructure | <input type="checkbox"/> RF/Coax <input type="checkbox"/> Low Frequency <input type="checkbox"/> Fiber Optics <input type="checkbox"/> Power Products   |
| <input type="checkbox"/> Internet Equipment                   | <input type="checkbox"/> DVI <input type="checkbox"/> D-Sub <input type="checkbox"/> SCSI <input type="checkbox"/> HSDDC <input type="checkbox"/> USB <input type="checkbox"/> Fire Wire <input type="checkbox"/> Modular Jacks |
|   | <input type="checkbox"/> Flat Cable <input type="checkbox"/> Cable Assemblies <input type="checkbox"/> DIN Connectors   |
|   | <input type="checkbox"/> MeMS <input type="checkbox"/> Coax <input type="checkbox"/> Flexprint <input type="checkbox"/> Other   |
| <input type="checkbox"/> Broadband                            | <input type="checkbox"/> 75 Ω <input type="checkbox"/> 50 Ω <input type="checkbox"/> Other  |
| <input type="checkbox"/> Military & Aerospace                 | <input type="checkbox"/> PPS <input type="checkbox"/> 711 Data Bus <input type="checkbox"/> 38999 <input type="checkbox"/> Other  |
| <input type="checkbox"/> Fiber Optics                         | <input type="checkbox"/> LX5 <input type="checkbox"/> SC&MTP <input type="checkbox"/> Multi Fiber Assemblies <input type="checkbox"/> Other   |
| <input type="checkbox"/> Other                                |   |

☐ Description of Others .....  
.....  
.....

- ☐ Please send the information by mail
- ☐ Please contact us by telephone
- ☐ Please contact us for a personal meeting



## International

### Argentina

Amphenol Argentina  
Av. Callao 930  
2nd Floor Office B "Plaza"  
C1023 AAP Buenos Aires  
Phone +54 / 11 / 48 15 35 79  
Fax +54 / 11 / 48 14 57 79

### Australia

Amphenol Australia Ltd.  
2 Fiveways Blvd  
Keysborough  
Victoria 31 73  
Phone +61 / 3 / 8796 / 8888  
Fax +61 / 3 / 8796 / 8801

### Brasilia

Amphenol do Brasil Ltda.  
Rua Diogo Moreira 132, 20th Floor  
CEP 05423-010 Sao Paulo SP  
Phone +55 / 11 / 3815.1003  
Fax +55 / 11 / 3815.1629

### France

Amphenol Socapex France  
21 Chemin du Défois  
B.P. 349  
39105 Dole Cedex  
Phone +33 / 3 / 84 82 94 00  
Fax +33 / 3 / 84 82 94 11

### Great Britain

Pyle-National  
A division of Amphenol Ltd.  
Unit D1, Crossgate Drive  
Queens Drive  
Industrial Estate  
Nottingham, NG2 1LW  
Phone: +44 / 115 / 986 6200  
Fax +44 / 115 / 986 6212

### Hongkong

Amphenol East Asia Limited  
Units 2201-02, Railway Plaza  
39 Chatham Road South  
Tsimshatsui, Kowloon  
Phone +852 / 2699 / 2663  
Fax +852 / 2688 / 0974

### India

Amphetrnix Limited  
Plot No. 105 Bhosari Industrial Area  
Pune - 411 026  
Phone +91 / 20 / 712 14 18  
Fax +91 / 20 / 712 05 81

### Italy

Amphenol Italia S.p.A.  
Via Barbaiana n. 5  
I-20020 Lainate (MI)  
Phone +39 / 2 / 93 254.1  
Fax +39 / 2 / 93 254.445

### Japan

Amphenol Japan, K.K.  
2-3-27, Kudan Minami  
Chiyoda-Ku  
Tokyo 102  
Phone +81 / 3 / 32 63 / 56 11  
Fax +81 / 3 / 52 76 / 70 59

### Korea

Amphenol DaeShin Limited  
#802 Joong-Dong 1131-5  
Wonmi-Ku  
Bucheon-City  
Kyunggi-Do  
Korea 420-020  
Phone +82 / 2 / 785 / 1588  
Fax +82 / 2 / 589 / 1514

### Mexico

Amphenol Mexico  
Prolongacion Reforma 61 - 6 B2  
Col. Paseo de las Lomas  
C.P. 01330 Mexico D.F.  
Phone +52 / 55 / 5258.9984  
Fax +52 / 55 / 5081.6890

### Netherlands

Amphenol Benelux b.v.  
Hoofdveste 19  
3992 AK Houten  
Phone +31 / 30 / 6 35 80 00  
Fax +31 / 30 / 6 37 78 99

### Peoples Republic of China

Amphenol-Tuchel Electronics GmbH  
China Branch  
210-1 Taishan Road  
Changzhou 213022  
Phone +86 / 05 19 / 5 11 03 01  
Fax +86 / 05 19 / 5 11 02 99

### Singapore

Amphenol East Asia Limited  
Asia Pacific Sales Operation  
Singapore Branch  
300 Beach Road  
#25-07 The Concourse  
Singapore 199555  
Phone +27 / 11 / 305-95 74  
Fax +27 / 11 / 305-95 76

### Sweden

Amphenol Scandinavia  
Johanneslundsvägen 2  
194 61 Upplands Väsby  
Phone +46 / 8 / 59 41 04 40  
Fax +46 / 8 / 59 03 38 00

### Spain

Amphenol Ibérica  
C/Comunidad de Madrid, 35-bis  
oficina N° 55 "Edificio Burgosol"  
E-28230 las Rozas Madrid  
Phone +34 / 91 64 07 30 2  
Fax +34 / 62 90 54 62 9

### South Africa

Amphenol International Ltd  
Chislehurst  
30 Impala Road  
Chislehurst  
Sandton, 2146  
Phone +27 / 11 / 7 83 95 17  
Fax +27 / 11 / 7 83 95 19

### Taiwan

Amphenol East Asia Ltd.  
Taiwan Branch (H.K.)  
116 Zhong Shan Road  
Lane 956 Taoyuan City  
Taiwan R.O.C. 330  
Phone +886 / 3 / 370 / 7855  
Fax +886 / 3 / 360 7259

### USA

Amphenol-Tuchel Electronics  
Representative Office  
6900 Haggerty Road  
Suite 200  
Canton, Michigan 48187  
Phone +1 / 734 / 451 6400  
Fax +1 / 734 / 451 7197

Amphenol Corporation  
Corporate Headquarters  
358 Hall Avenue  
Wallingford, CT 06492  
Phone +1 / 203 / 2 65 / 89 00  
Fax +1 / 203 / 2 65 / 86 28

Your engineering sales representatives:

# Amphenol

Amphenol-Tuchel Electronics GmbH

August-Haesser-Str. 10 · D-74080 Heilbronn · Germany · Phone +49 (0) 71 31/9 29-0 · Fax +49 (0) 71 31/9 29-486 · [www.amphenol.de](http://www.amphenol.de)